

StrokeStyles: Stroke-Based Segmentation and Stylization of Fonts

Supplemental material

DANIEL BERIO, Goldsmiths, University of London, Computing Dept., United Kingdom
FREDERIC FOL LEYMARIE, Goldsmiths, University of London, Computing Dept., United Kingdom
PAUL ASENTE, Adobe Research, USA
JOSE ECHEVARRIA, Adobe Research, USA

1 FONT SEGMENTATION EXAMPLES

We used our method to segment 103 fonts; the following shows three glyphs from each one. For Latin fonts we display the characters “ABC”, while for non-Latin fonts the characters depend on the writing system. The left column shows the original glyphs. The middle column shows the strokes (transparent black) with the respective spines (red) overlaid on the glyphs (blue). The right column shows the corresponding stroke areas.

Adobe Bengali Bold



Adobe Gothic Std B



Adobe Hebrew Bold



Adobe Kaiti Std R



Adobe Naskh Medium

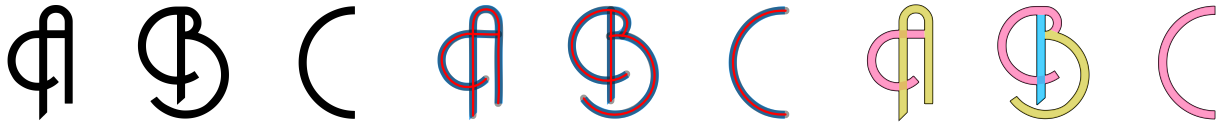


Authors' addresses: Daniel Berio, Goldsmiths, University of London, Computing Dept., London, United Kingdom, d.berio@gold.ac.uk; Frederic Fol Leymarie, Goldsmiths, University of London, Computing Dept., London, United Kingdom, ffl@gold.ac.uk; Paul Asente, Adobe Research, San Jose, USA, asente@adobe.com; Jose Echevarria, Adobe Research, San Jose, USA, echevarr@adobe.com.

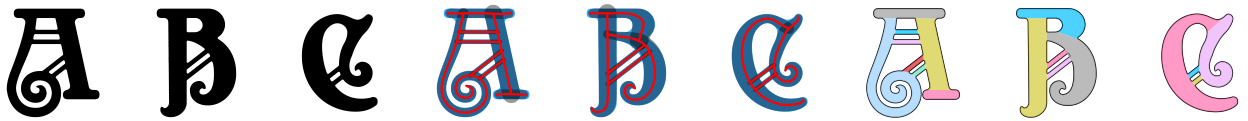
Amador



Andes



Apollo ASM



Apple Chancery



Arial Bold



Army Expanded



Articulate



Athelas Arabic Book



BSTHebrew



Balloon D Extra Bold

A B C  

Balloon URW Bold

A B C  

Banco

A B C  

Bickham Script Pro 3 Bold

A B C  

Bickham Script Pro 3

A B C  

Big Caslon Medium

A B C  


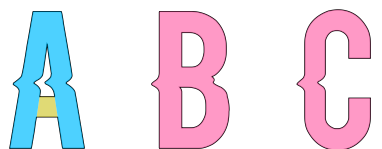
Bistro Script

A B C  

Blackbird

A B C  

Blacklisted

A B C  

BodoniXT

A B C A B C A B C

Caflich Script Pro Light

A B C A B C A B C

Caflich Script Pro Semibold

A B C A B C A B C

Chee Peenutt

A B C A B C A B C

Cholo Letters Demo

A B C A B C A B C

Cochin Bold

A B C A B C A B C

College Semi condensed

A B C A B C A B C

Comic Sans MS

A B C A B C A B C

Cooper Std Black Italic

A B C A B C A B C

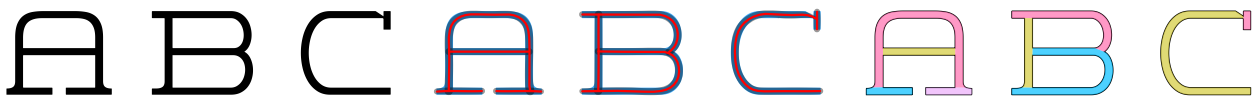
Cyberdyne Italic



Didot Bold



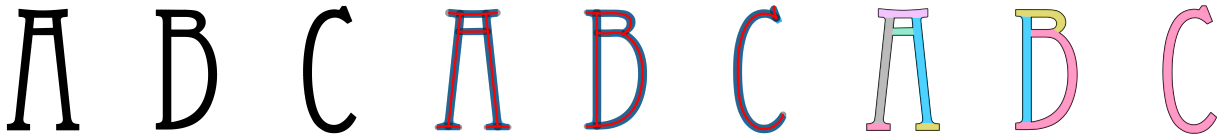
Discourse Wide Light Fill



Doctor Fibes DEL



Eccentric



Eckmann



Elektrix OT Bold



Friday Vibes



Georgia



Giddyup Std



GimletDisplay Medium



Gin



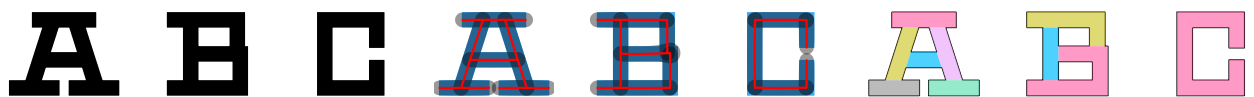
Givry-Regular



Graphite Std Bold



HWT Geometric



HeavyHeap-Regular



Hobeaux Rococeaux Background



Hobeaux Rococeaux Sherman



IBM Plex Arabic

ض ظ غ ض ظ غ ض ظ غ

Impact

A B C A B C A B C

InputSerif Light

A B C A B C A B C

Japanese 3017

夨 卍 卍 夨 卍 卍 夨 卍 卍

Japanese

际 家 加 际 家 加 际 家 加

Juniper Std Medium

A B C A B C A B C

Kadwa Bold

A B C A B C A B C

Kazuraki SP2N L

夨 夨 造 夨 夨 造 夨 夨 造

Keep on Truckin'FW

A B C A B C A B C

Kefa Regular

A B C A B C A B C

Kegger

A B C A B C A B C

Leather Light

A B C A B C A B C

Luminari

A B C A B C A B C

Manicotti Regular

A B C A B C A B C

Mattoa Demo

A B C A B C A B C

Melinda art design

A B C A B C A B C

Moderne Fraktur

A B C A B C A B C

Myriad Hebrew Bold

א ב ג א ב ג א ב ג

Naftalene-Regular



Neo-Navy Bold



Noam Text Bold



Noteworthy Bold



Noto Serif Myanmar Bold



Old London



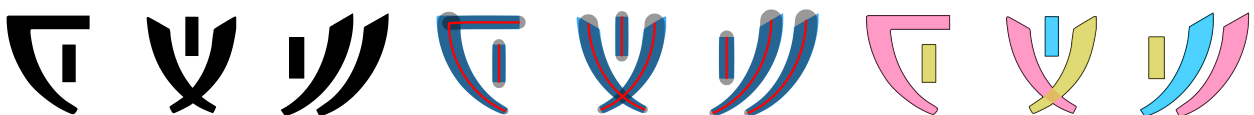
Orbe Pro



P22 Arts and Crafts Bold



PACL



Parkside Regular



Party LET Plain



Postino Std Italic



Quake Std



REVERENT REG



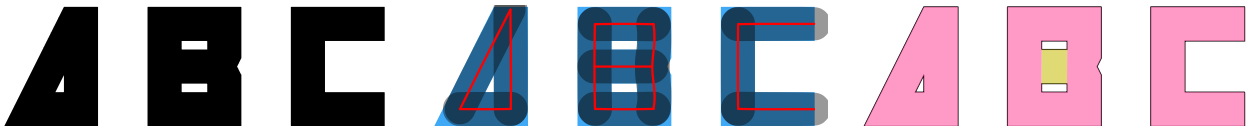
Rasa SemiBold



Regensburg Regular



Russian Regular



Sanvito Pro Bold



Sanvito Pro Light

A B C A B C A B C

Savoye LET Plain:1.0

A B C A B C A B C

Sidaan

A B C A B C A B C

SignPainter-HouseScript Semibold

A B C A B C A B C

SlabTallX

A B C A B C A B C

Sloop ScriptThree

A B C A B C A B C

Snell Roundhand Bold

A B C A B C A B C

Snell Roundhand

A B C A B C A B C

Talon

A B C A B C A B C

Times New Roman Bold

A B C A B C A B C

TisaPro

A B C A B C A B C

Trajan Pro 3

A B C A B C A B C

URW Antiqua

A B C A B C A B C

Ultra Regular

A B C A B C A B C

Un Yetgul

A B C A B C A B C

Valken Regular

A B C A B C A B C

Vracter_Work

A B C A B C A B C

Zapfino

A B C A B C A B C